

TES Reliable in Quality

1358 Sound Analyzer

- For Delicate Sound Improvement (Sound Effect/Sound Environment)
- Real Time 1/1 (9 bands) & 1/3 (27 bands) octave analysis
- Wide Linearity range of 100dB
- Large LCD display with backlighting
- Real time Clock with calendar
- Memory Max. 12,280 records of Lp data
- Software with RS-232 interface

RS-232

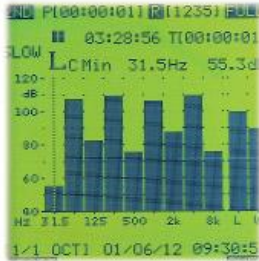


40 Hz

130



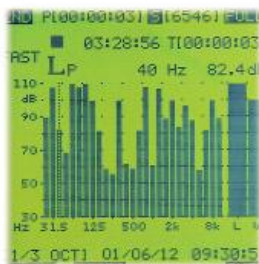
TES-1358 Sound Analyzer Real Time 1/1 & 1/3 Octave band Analysis



1/1 Octave band center frequencies: (9 bands)

1/1 Octave band center frequencies : (9 bands)

31.5Hz, 63Hz, 125Hz, 250Hz, 500Hz, 1KHz, 2KHz, 4KHz, 8KHz.



1/3 Octave band center frequencies : (27 bands)

25Hz, 31.5Hz, 40Hz, 50Hz, 63Hz, 80Hz, 100Hz, 125Hz, 160Hz,

200Hz, 250Hz, 315Hz, 400Hz, 500Hz, 630Hz, 800Hz, 1KHz, 1.25KHz,

1.6KHz, 2KHz, 2.5KHz, 3.15KHz, 4KHz, 5KHz, 6.3KHz, 8KHz, 10KHz.

P.C. Software

Date-Time	Display	Mode	WGT	25Hz	31.5Hz
01/06/12--10 32 53	I/3 OCT	LA	FAST	24.7	34.4
01/06/12--10 32 55	I/3 OCT	LA	FAST	27.8	31.1
01/06/12--10 32 57	I/3 OCT	LA	FAST	27.7	32.9
01/06/12--10 32 59	I/3 OCT	LA	FAST	26.3	32.7
01/06/12--10 33 00	I/3 OCT	LA	FAST	25.6	32.5
01/06/12--10 33 02	I/3 OCT	LA	FAST	24.6	35.9
01/06/12--10 33 04	I/3 OCT	LA	FAST	27.4	31.0
01/06/12--10 33 06	I/3 OCT	LA	FAST	26.4	32.1
01/06/12--10 33 08	I/3 OCT	LA	FAST	25.9	35.3
01/06/12--10 33 10	I/3 OCT	LA	FAST	26.7	34.7
01/06/12--10 33 12	I/3 OCT	LA	FAST	27	34.1
01/06/12--10 33 15	I/3 OCT	LA	FAST	26.7	32.5
01/06/12--10 33 17	I/3 OCT	LA	FAST	26.7	32.5
01/06/12--10 33 19	I/3 OCT	LA	FAST	28.2	31.8
01/06/12--10 33 21	I/3 OCT	LA	FAST	25.6	33
01/06/12--10 33 23	I/3 OCT	LA	FAST	27.3	35.7
01/06/12--10 33 25	I/3 OCT	LA	FAST	27.8	35.9

Date-Time	Display	Mode	WGT	25Hz	31.5Hz	40
01/06/12--09 32:15	I/3 OCT	LA	FAST	25.5	29.5	2
01/06/12--09 32:16	I/3 OCT	LA	FAST	27.1	32.2	2
01/06/12--09 32:17	I/3 OCT	LA	FAST	27.2	31.7	2
01/06/12--09 32:18	I/3 OCT	LA	FAST	28.7	32.5	2
01/06/12--09 32:19	I/3 OCT	LA	FAST	28.2	33.3	3
01/06/12--09 32:20	I/3 OCT	LA	FAST	24.8	33.9	2
01/06/12--09 32:21	I/3 OCT	LA	FAST	25.9	36	2
01/06/12--09 32:22	I/3 OCT	LA	FAST	28.3	35.6	2
01/06/12--09 32:23	I/3 OCT	LA	FAST	28.7	34.9	2
01/06/12--09 32:24	I/3 OCT	LA	FAST	26.1	34.4	3



Memory

MemorySize: 256.0 K, Remained: 190.9 K, 100.0% Completed

ID Code: 30213910, Rec Sampling: 00:00:01, Rec Period: 00:00:03

System Time Set: 01/06/12----09:33:42, Manual Records: Automatic Records

Date	Time	Display	No.s of Re
01/06/12	09 32 14	I/3 OCT	10
01/06/12	09 32 40	SLM	3
01/06/12	09 32 58	SLM	1
01/06/12	09 33 11	I/1 OCT	3



FEATURES :

- Real-time 1/1-Octave and 1/3-Octave analysis.
- Large display with backlighting.
- Memory max. 12280 records of Lp data.
- Wide linearity range of 100dB.
- Real time clock with calendar.
- RS-232 interface.

GENERAL SPECIFICATIONS :

Applicable standards	IEC 60651 Type2, IEC 60804 Type2, BS EN 6065, 1994, IEC 1260-1995
Microphone	1/2-inch Electret condenser microphone
Accuracy	±(1.5dB (ref 94dB @ 1KHz)
Measurement range	30dB to 130dB
Measurement function	Lp , Leq , LE , Lmax , Lmin
Frequency range	25Hz ~ 10KHz
Frequency weighting	A ,C, Flat
Time weighting	Fast , Slow
Display	160x160 dot matrix display with back light Sound level meter display Numerical : 4 digits, up data cycle 0.5s, resolution 0.1dB Bar graph : Scale range 100dB , update cycle 0.125s Real time clock : Year, Month, Day, Hour, Minute, Second
1/1•1/3 Analyzer level range	5 ranges in 10-dB step, 20-90dB/ 30-100dB/ 40-110dB/ 50-120dB/60-130dB
1/1 Octave and 1/3 Octave band filters	1/1 Octave band center frequencies : (9 bands) 31.5Hz, 63Hz, 125Hz, 250Hz, 500Hz, 1KHz, 2KHz, 4KHz, and 8KHz. 1/3 Octave band center frequencies : (27 bands) 25Hz, 31.5Hz, 40Hz, 50Hz, 63Hz, 80Hz, 100Hz, 125Hz, 160Hz, 200Hz, 250Hz, 315Hz, 400Hz, 500Hz, 630Hz, 800Hz, 1KHz, 1.25KHz, 1.6KHz, 2KHz, 2.5KHz, 3.15KHz, 4KHz, 5KHz, 6.3KHz, 8KHz 10KHz.
Extension cable	Available in lengths of 5m (TL-F47/5M) and 10m(TL-F47/10M)
Memory capacity	12280 data (Sound level meter mode) 1024 data (1/1 or 1/3 oct. analysis)
Signal output	AC output : 2 Vrms (at full scale) DC output : 10mVDC / dB Serial interface : RS-232 , 9 pin D-sub
Power	4 pcs of C size 1.5V (LR14) batteries
External DC power supply	6V, 1A
Battery life	Approx. 2hrs
Operating Temperature/Humidity	0°C to 40°C , 10 to 80% RH
Dimensions & Weight	34.5(H) X 10(W) X 6(D) cm & Approx. 950g (including batteries)
Accessories	Instruction manual, Battery x 4, Carry case, Software, RS-232 cable, 9 Pin to 25 Pin gender changer, Adjustment screwdriver, wind shield, 3.5ø plug, AC/DC Adaptor.

**TES ELECTRICAL ELECTRONIC CORP.**

7F, No.31 Lane 513, Rui Guang Rd., Neihu Dist, Taipei , Taiwan

Tel : (02) 2799-3660 Fax : 886-2-2799-5099

E-mail : tes@ms9.hinet.net <http://www.tes.com.tw>

TES-1358 Sound Analyzer

Full Page Notebook P.C.Screen

