

## GENERAL SPECIFICATION

This meter is designed and produced according to IEC61010 safety standard, and leave factory with best status after inspection.

**Channel :** Single-Channel input

**RMS :** Measure and record virtual value of voltage and leaked current of AC cycle signal. ( 100,096 data )

**Accuracy :** Voltage 10V~600V (40Hz ~ 1kHz)  $\pm 2\% \pm 1V$

Current 10A~200A (50/60Hz)  $\pm 2\% \pm 1A$

**Wave record :** Record the wave which exceeds the set Voltage/Current ( 764 data )

**RTC:** Real time display, calibrated with software.

**MAX/MIN:** maximum and minimum reading hold

**Data output:** USB output

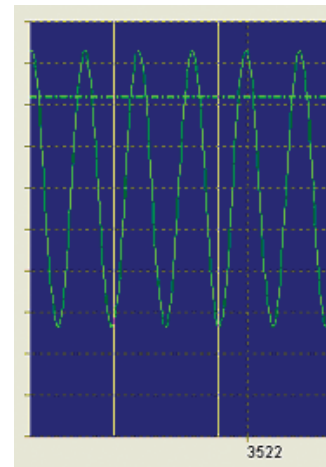
The Datalogger USB software is a program for collecting data from the DATA LOGGER when it is connected to a PC or notebook computer. The data may be displayed graphically, as Excel or similar programs. The major functions are all listed in the main window.

The maximum number of data points is 100,096.

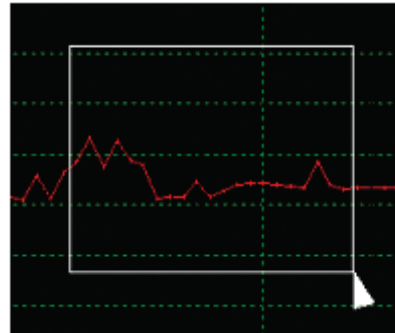
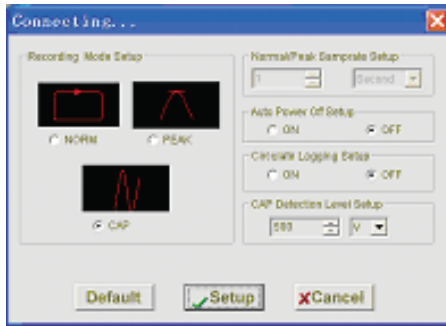
**System Required:** Windows 2000 or Windows XP or Vista

**Minimum Hardware Required :** PC or NoteBook with Pentium 90MHz or higher 32 MB RAM; At least 7 MB byte hard disk space available to install Datalogger USB software.

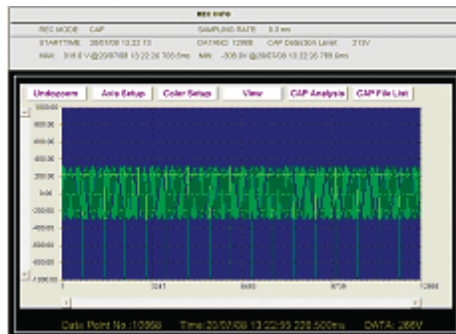
Recommended display resolution 1024X768 with High Color(16 bit).



Analysis the time,frequent,RMS and the Vp-p of the wave graph



ZOOM IN and ZOOM OUT



READINGS TRANSFERRED FROM DATA LOGGER TO PC

File No.	Type	Data Name	View
1	DATA	20071008 13 22 12	View
2	DATA	20071008 13 22 18	View
3	DATA	20071008 13 22 24	View
4	DATA	20071008 13 22 30	View
5	DATA	20071008 13 22 36	View
6	DATA	20071008 13 22 42	View
7	DATA	20071008 13 22 48	View
8	DATA	20071008 13 22 54	View
9	DATA	20071008 13 23 00	View
10	DATA	20071008 13 23 06	View
11	DATA	20071008 13 23 12	View
12	DATA	20071008 13 23 18	View
13	DATA	20071008 13 23 24	View

File list of the Waveform graphs

No.	Time	Data Value
1	20071008 13 22 30	0.0 V
2	20071008 13 22 30	0.0 V
3	20071008 13 22 30	0.0 V
4	20071008 13 22 30	0.0 V
5	20071008 13 22 30	0.0 V
6	20071008 13 22 30	0.0 V
7	20071008 13 22 30	0.0 V
8	20071008 13 22 30	0.0 V
9	20071008 13 22 30	0.0 V
10	20071008 13 22 30	0.0 V
11	20071008 13 22 30	0.0 V
12	20071008 13 22 30	0.0 V
13	20071008 13 22 30	0.0 V
14	20071008 13 22 30	0.0 V
15	20071008 13 22 30	0.0 V
16	20071008 13 22 30	0.0 V
17	20071008 13 22 30	0.0 V
18	20071008 13 22 30	0.0 V
19	20071008 13 22 30	0.0 V
20	20071008 13 22 30	0.0 V
21	20071008 13 22 30	0.0 V
22	20071008 13 22 30	0.0 V
23	20071008 13 22 30	0.0 V
24	20071008 13 22 30	0.0 V
25	20071008 13 22 30	0.0 V
26	20071008 13 22 30	0.0 V
27	20071008 13 22 30	0.0 V

Import data in MS Excel

\*Technical Specifications & Appearance are subject to change without prior notice