

Dial Indicator product update overview

[Current: S-type New: A-type]

The following charts illustrate which changes have been made from the old, “S” type Dial Indicators to the new, “A” type. There have been a total of 9 changes, only 2 of which have been shared between all models:

- 1: Updated bezel & crystal assembly
- 2: Tapered dial hands

Further explanation of each change / modification can be found on the last two slides.

***Note / one key takeaway:** many inch models will now have an *M2.5 thread* for the stop screw. Keep this in mind when quoting lifting levers, etc.



Previous “S” model
(waterproof model)



New “A” model
(waterproof model)

Dial Indicator product update overview

[Current: S-type New: A-type]

Series 1

Old PN	New PN	Changes / Modifications								
		1	2	3	4	5	6	7	8	9
1003T(B)	1003A(B)	✓	✓							✓
1911T(B)-10	1911A(B)-10	✓	✓							✓
1913T(B)-10	1913A(B)-10	✓	✓							✓
1921T(B)-10	1921A(B)-10	✓	✓							✓
1923T(B)-10	1923A(B)-10	✓	✓							✓
1925T(B)-10	1925A(B)-10	✓	✓							✓
1013S(B)-10	1013A(B)-10	✓	✓	✓			✓			✓
1040S(B)	1040A(B)	✓	✓	✓			✓			✓
1041S(B)	1041A(B)	✓	✓	✓			✓			✓
1044S(B)-15	1044A(B)-15	✓	✓	✓			✓			✓
1044S(B)-60	1044A(B)-60	✓	✓	✓			✓		✓	✓
1044S(B)	1044A(B)	✓	✓	✓			✓			✓
1045S(B)	1045A(B)	✓	✓	✓			✓			✓
1109S(B)-10	1109A(B)-10	✓	✓	✓			✓			✓
1124S(B)	1124A(B)	✓	✓	✓			✓			✓
1900S(B)-10	1900A(B)-10	✓	✓	✓			✓	✓		
1900S(B)-72	1900A(B)-72	✓	✓	✓			✓	✓		
1929S(B)	1929A(B)	✓	✓	✓			✓			
1929S(B)-62	1929A(B)-62	✓	✓	✓			✓			
1160T	1160A	✓	✓				✓			✓
1162T	1162A	✓	✓				✓			✓
1960T	1960A	✓	✓				✓			

Old PN	New PN	Changes / Modifications								
		1	2	3	4	5	6	7	8	9
1410S(B)	1410A(B)	✓	✓	✓		✓				✓
1410S(B)-10	1410A(B)-10	✓	✓	✓		✓				✓
1411S(B)	1411A(B)	✓	✓	✓		✓				✓
1506S(B)	1506A(B)	✓	✓	✓		✓				✓
1507S(B)	1507A(B)	✓	✓	✓		✓				✓
1670S(B)	1670A(B)	✓	✓	✓		✓				✓
1671S(B)	1671A(B)	✓	✓	✓		✓				✓
1780S(B)	1780A(B)	✓	✓	✓		✓				✓
1781S(B)	1781A(B)	✓	✓	✓		✓				✓
1802S(B)-10	1802A(B)-10	✓	✓	✓		✓				✓
1803S(B)-10	1803A(B)-10	✓	✓	✓		✓				✓
1909S(B)-62	1909A(B)-62	✓	✓	✓		✓				
1910S(B)-72	1910A(B)-72	✓	✓	✓		✓				
1166T	1166A	✓	✓							✓
1167T	1167A	✓	✓							✓
1168T	1168A	✓	✓							✓
1961T	1961A	✓	✓							
1010S(B)-11	1010A(B)-11	✓	✓	✓		✓				✓
1011S(B)-11	1011A(B)-11	✓	✓	✓		✓				✓
1044S(B)-01	1044A(B)-01	✓	✓	✓		✓				✓
1045S(B)-01	1045A(B)-01	✓	✓	✓		✓				✓
1230S(B)-01	1230A(B)-01	✓	✓	✓		✓				✓
1231S(B)-01	1231A(B)-01	✓	✓	✓		✓				✓

Changes:

- 1: Bezel & Crystal
- 2: Dial Hands (Parts List)
- 3: Cap
- 4: Shape of Stop Screw
- 5: Stop Screw Thread Dia.
- 6: Limit Hands & Clamp Assy
- 7: Length of Stem
- 8: Waterproof Type
- 9: Short Pointer

Dial Indicator product update overview

[Current: S-type New: A-type]

Series 2

Old PN	New PN	Changes / Modifications									Old PN	New PN	Changes / Modifications								
		1	2	3	4	5	6	7	8	9			1	2	3	4	5	6	7	8	9
2044S(B)	2044A(B)	✓	✓	✓	✓		✓				2118S(B)-10	2118A(B)-10	✓	✓	✓	✓		✓			
2044S(B)-60	2044A(B)-60	✓	✓	✓	✓		✓		✓		2119S(B)-10	2119A(B)-10	✓	✓	✓	✓		✓			
2044S(B)-09	2044A(B)-09	✓	✓	✓	✓		✓				2124S(B)-10	2124A(B)-10	✓	✓	✓	✓		✓			
2045S(B)	2045A(B)	✓	✓	✓	✓		✓				2310S(B)-10	2310A(B)-10	✓	✓	✓	✓		✓			
2046S(B)	2046A(B)	✓	✓	✓	✓		✓				2320S(B)-10	2320A(B)-10	✓	✓				✓			
2046S(B)-60	2046A(B)-60	✓	✓	✓	✓		✓		✓		2330S(B)-10	2330A(B)-10	✓	✓				✓			
2046S(B)-09	2046A(B)-09	✓	✓	✓	✓		✓				2900S(B)-10	2900A(B)-10	✓	✓	✓	✓		✓			
2046S(B)-80	2046A(B)-80	✓	✓		✓		✓				2900S(B)-70	2900A(B)-70	✓	✓	✓	✓		✓		✓	
2047S(B)	2047A(B)	✓	✓	✓	✓		✓				2900S(B)-72	2900A(B)-72	✓	✓	✓	✓		✓			
2048S(B)-10	2048A(B)-10	✓	✓				✓				2901S(B)-10	2901A(B)-10	✓	✓	✓	✓		✓			
2050S(B)-60	2050A(B)-60	✓	✓				✓		✓		2902S(B)	2902A(B)	✓	✓	✓	✓		✓			
2050S(B)	2050A(B)	✓	✓				✓				2928S(B)	2928A(B)	✓	✓	✓	✓		✓			
2050S(B)-19	2050A(B)-19	✓	✓				✓				2929S(B)	2929A(B)	✓	✓	✓	✓		✓			
2052S(B)	2052A(B)	✓	✓				✓				2929S(B)-60	2929A(B)-60	✓	✓	✓	✓		✓		✓	
2052S(B)-19	2052A(B)-19	✓	✓				✓				2929S(B)-62	2929A(B)-62	✓	✓	✓	✓		✓			
2109S(B)-10	2109A(B)-10	✓	✓	✓	✓		✓				2952S(B)	2952A(B)	✓	✓				✓			
2109S(B)-70	2109A(B)-70	✓	✓	✓	✓		✓		✓		2959S(B)	2959A(B)	✓	✓	✓	✓		✓			
2110S(B)-10	2110A(B)-10	✓	✓	✓	✓		✓				2971TB	2971AB	✓	✓				✓			
2110S(B)-70	2110A(B)-70	✓	✓	✓	✓		✓		✓		2972TB	2972AB	✓	✓				✓			
2113S(B)-10	2113A(B)-10	✓	✓	✓	✓		✓				2973TB	2973AB	✓	✓				✓			

Changes:

- 1: Bezel & Crystal
- 2: Dial Hands (Parts List)
- 3: Cap
- 4: Shape of Stop Screw
- 5: Stop Screw Thread Dia.
- 6: Limit Hands & Clamp Assy
- 7: Length of Stem
- 8: Waterproof Type
- 9: Short Pointer

Dial Indicator product update overview

[Current: S-type New: A-type]

Series 2

Old PN	New PN	Changes / Modifications								
		1	2	3	4	5	6	7	8	9
2960T	2960A	✓	✓				✓			
2990T-10	2990A-10	✓	✓				✓			
2356S(B)-10	2356A(B)-10	✓	✓	✓	✓	✓				
2358S(B)-10	2358A(B)-10	✓	✓			✓				
2414S(B)	2414A(B)	✓	✓			✓				
2415S(B)	2415A(B)	✓	✓			✓				
2416S(B)	2416A(B)	✓	✓			✓				
2416S(B)-06	2416A(B)-06	✓	✓			✓				
2416S(B)-10	2416A(B)-10	✓	✓			✓				
2417S(B)	2417A(B)	✓	✓			✓				
2424S(B)-19	2424A(B)-19	✓	✓			✓				
2506S(B)	2506A(B)	✓	✓	✓	✓	✓				
2507S(B)	2507A(B)	✓	✓	✓	✓	✓				
2514S(B)	2514A(B)	✓	✓			✓				
2776S(B)	2776A(B)	✓	✓			✓				
2802S(B)-10	2802A(B)-10	✓	✓	✓	✓	✓				
2803S(B)-10	2803A(B)-10	✓	✓	✓	✓	✓				
2804S(B)-10	2804A(B)-10	✓	✓	✓	✓	✓				
2805S(B)-10	2805A(B)-10	✓	✓	✓	✓	✓				
2904S(B)	2904A(B)	✓	✓			✓				
2905S(B)-10	2905A(B)-10	✓	✓	✓	✓	✓				

Old PN	New PN	Changes / Modifications								
		1	2	3	4	5	6	7	8	9
2909S(B)-62	2909A(B)-62	✓	✓	✓	✓	✓				
2910S(B)-10	2910A(B)-10	✓	✓	✓	✓	✓				
2910S(B)-72	2910A(B)-72	✓	✓	✓	✓	✓				
2914S(B)	2914A(B)	✓	✓			✓				
2922S(B)	2922A(B)	✓	✓	✓	✓	✓				
2923S(B)-10	2923A(B)-10	✓	✓	✓	✓	✓				
2976TB	2976AB	✓	✓							
2977TB	2977AB	✓	✓							
2978TB	2978AB	✓	✓							
2961T	2961A	✓	✓							
2991T-10	2991A-10	✓	✓							
2046S(B)-01	2046A(B)-01	✓	✓	✓	✓	✓				
2046S(B)-11	2046A(B)-11	✓	✓	✓	✓	✓				
2047S(B)-01	2047A(B)-01	✓	✓	✓	✓	✓				
2047S(B)-11	2047A(B)-11	✓	✓	✓	✓	✓				
2050S(B)-01	2050A(B)-01	✓	✓			✓				
2056S(B)-01	2056A(B)-01	✓	✓			✓				
2109S(B)-11	2109A(B)-11	✓	✓	✓	✓	✓				
2119S(B)-11	2119A(B)-11	✓	✓	✓	✓	✓				
2231S(B)-01	2231A(B)-01	✓	✓	✓	✓	✓				
2902S(B)-01	2902A(B)-01	✓	✓	✓	✓	✓				

Changes:

- 1: Bezel & Crystal
- 2: Dial Hands (Parts List)
- 3: Cap
- 4: Shape of Stop Screw
- 5: Stop Screw Thread Dia.
- 6: Limit Hands & Clamp Assy
- 7: Length of Stem
- 8: Waterproof Type
- 9: Short Pointer

Dial Indicator product update overview

[Current: S-type New: A-type]

Series 3 & 4

	Old PN	New PN	Changes / Modifications								
			1	2	3	4	5	6	7	8	9
Series 3	3046S(B)	3046A(B)	✓	✓	✓	✓		✓			
	3047S(B)	3047A(B)	✓	✓	✓	✓		✓			
	3050S(B)	3050A(B)	✓	✓				✓			
	3052S(B)-19	3052A(B)-19	✓	✓				✓			
	3058S(B)-19	3058A(B)-19	✓	✓				✓			
	3060S(B)-19	3060A(B)-19	✓	✓				✓			
	3062S(B)-19	3062A(B)-19	✓	✓				✓			
	3109S(B)10	3109A(B)10	✓	✓	✓	✓		✓			
	3414S(B)	3414A(B)	✓	✓			✓				
	3415S(B)	3415A(B)	✓	✓			✓				
	3416S(B)	3416A(B)	✓	✓			✓				
	3417S(B)	3417A(B)	✓	✓			✓				
	3424S(B)-19	3424A(B)-19	✓	✓			✓				
	3426S(B)-19	3426A(B)-19	✓	✓			✓				
	3428S(B)-19	3428A(B)-19	✓	✓			✓				
3802S(B)-10	3802A(B)-10	✓	✓	✓	✓	✓					
3803S(B)-10	3803A(B)-10	✓	✓	✓	✓	✓					
Series 4	4046S(B)	4046A(B)	✓	✓	✓	✓		✓			
	4887S(B)-19	4887A(B)-19	✓	✓			✓				

Changes:

- 1: Bezel & Crystal
- 2: Dial Hands (Parts List)
- 3: Cap
- 4: Shape of Stop Screw
- 5: Stop Screw Thread Dia.
- 6: Limit Hands & Clamp Assy
- 7: Length of Stem
- 8: Waterproof Type
- 9: Short Pointer

Dial Indicator product update overview

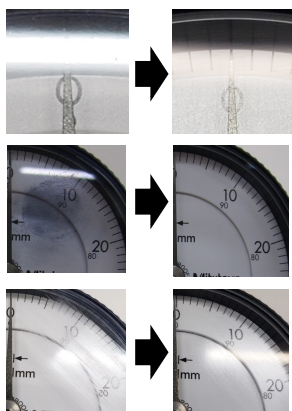
[Current: S-type New: A-type]

Improvements and Changes

①

Bezel

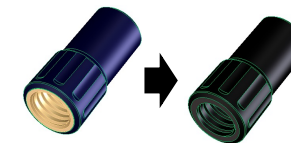
- Uses a coating that suppresses reflection
- Uses a coating to prevent stains
- Interchangeable with S type
- Improved scratch resistance
- Bezel color: Navy blue → black



③

Cap

- Integral molding of resin
- Interchangeable with S type
- Cap color: Navy blue → black



④

Shape of Stop Screw



⑤

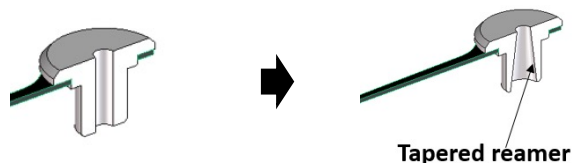
Stop Screw Thread Dia.

4-48 UNF → M2.5x0.45

②

Indicating hand (parts)

Abolish custom taper reamer processing



➡ Arrows indicate change from old type (left) to new type (right)

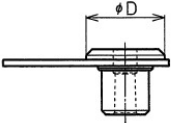
Dial Indicator product update overview

[Current: S-type New: A-type]

Improvements and Changes

⑨

Short Pointer

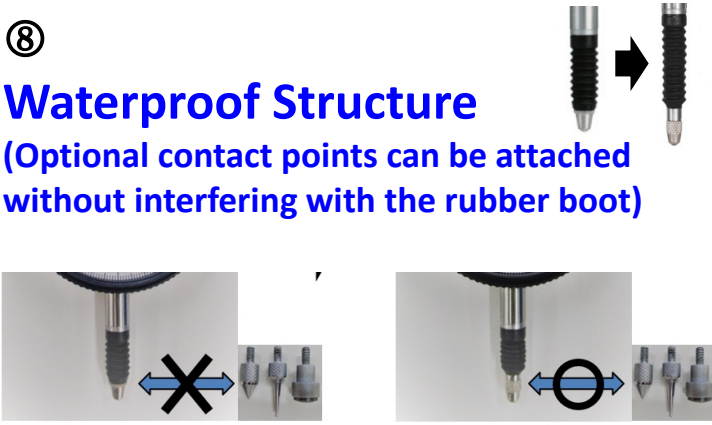
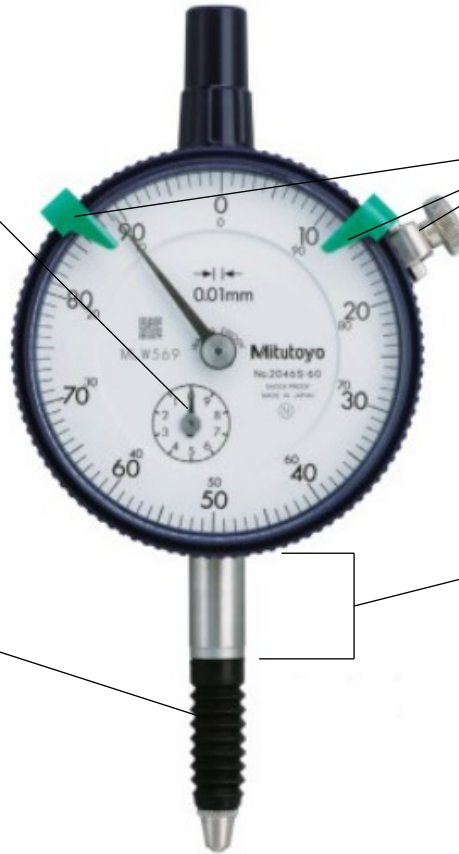


	ØD	
	Old Type	New Type
Series 1 Bezel Ø36	2.9	2
Series 1 Bezel Ø31	1.6	2
Series 1	2.9	2

⑧

Waterproof Structure

(Optional contact points can be attached without interfering with the rubber boot)

⑥

Limit hand • Bezel clamp

Standard accessory ➡ Optional accessory
(Inch product: Bezel clamp included)

⑦

Stem Length

12.2mm ➡ 13.8mm

➡ Arrows indicate change from old type (left) to new type (right)