

## Fiedler 60, 360 DEGREE ARTICULATING BORESCOPE



### Technique Technical Advantages

1. Portable design, easy to operate, can be changed Replace lithium battery Pool, work Long time In the narrow space between Inside examine Various Works Industry Pipeline or Miscellaneous

Preparation Corruption eclipse, crack Pattern, weld Connect, foreign matter, grinding damage and internal parts processing, and pass Pass Refined thin of Summary combine Detection;

3. Ergonomic design Concept, external View Atmosphere, usability Sleep Perfection in one hand, one-touch locking;

4. Various regulation Grid Photo The camera can select of;

5. Mechanical Control 360 Full rotation change, unilateral Curve greater than 150 Degree, flexible control, labor saving, improved work efficiency, right At electric

Assist change The failure rate is low; With turn Towards Lock

6.4.5inch LCD smart Photo Camera, video Integrated functions, convenient and Time record test data

7. Front end super bright led illumination, excellent Chemical Lighting System design, some can be equipped with Preparation High brightness light Fiber illumination;

8. Have WIFI Function, can be hour Use mobile phone/iPad View look Inspection Video;

Actual effect diagram reference:

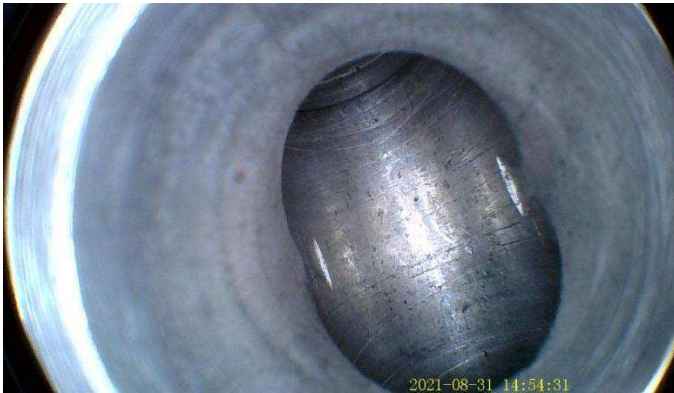


Photo picture head parameter

model	Fiedler60	Outer diameter	Φ6.2mm
Pixels	1,000,000Pixel	Probe length	16Millimeters
Field of view	120Spend	Bending angle (upper/Down/Left/right)	180°
Depth of Field	10-100Millimeters	Insertion tube length	Standard length1rice
Observation direction	Forward	Insert pipe quality	Stainless steel wire Weaving Tube
illumination	High lighted illumination		

2, facing the exploration Needle Parameters

Hold vertical Stick Control and Steering	360°Rotation	Fixed position	Fixed interior electricity Resistance
Guide Angle	One Side>90°	Lead guide Distance and long Spend	Standardallow1rice
Axis Direction Control	360°axisRotationchange	Insertion tube	4Layers of tungsten wire braidTube

Tie System weight	Including bottom plate The whole set equipment:  1.5Kg bare metal:1Kilogram	Host size	14.5centimeterX 10.5centimeterX  4.5centimeter
Electricity source	Lithium batteryPool:3.7V,3600mA	Knot Structural materials	Plastic PC shell
LCD screen	Bright4.5Inch active moment Array color  Color LCD Show Display	Tune Light	handDynamicall4files
data/Oporto	USB2.0port,WiFi	Memory	16Ghigh speed SD Card
according to key Function	Vegetable one operate, video, photo	White Balance	Since move White Balance
Image function	Picture mirror picture, Shrink put ,Preview, record  sound	Language Support	support12Country

Show Display and System Configuration

Host system operating temperature	-10°C~50°C, the LCD panel must be heated to 0°C the following	Relative humidity	maximum 90%, no condensation
Video probe operating temperature	-20°C~60°C, lower than 0°C Boot operations should be reduced	water proof	Probes and objectives can withstand IP67 Defend  water
Storage temperature	-20°C~60°C		

- Automobile industry: The automobile industry is mainly used to detect and diagnose wear, carbon deposits, blockages, etc. of automobile engines, cylinders, hydraulic components, fuel pipes, air-conditioning systems, differentials, water tanks, oil tanks, and gear boxes.

- Aerospace: Inspection of aircraft turbines, blades, engines, welds, the inside of combustion chambers or fuselage, and rocket engine research, development, production and manufacturing.
- Industrial casting: mainly used for quality control in the process of mechanical processing. Such as testing various parts casting, hydraulic casting, pump body and valve body casting, mechanical parts casting, pipeline and pipe fittings casting units, used to check the casting sand inclusion, burr and staggered hole conditions and other quality control.
- Wind power generation: used for equipment inspection of nuclear power plants, wind power plants, hydropower plants, thermal power plants and power construction units, such as defect detection, condition monitoring inspection and maintenance of important equipment such as turbines, pipelines, condenser tubes, pumps, boilers, heat exchangers, valves, pressure vessels, etc.
- Military equipment: used to inspect gun barrels, cannon barrels, armored vehicles and other military equipment.