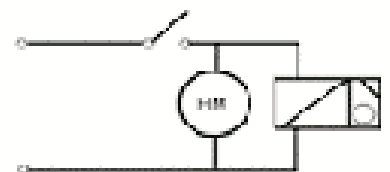
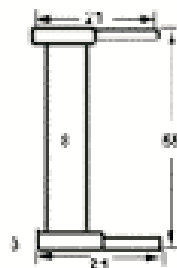
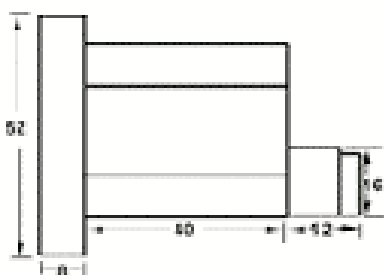


FEATURES

Counting Range	99999.99 hours
Consumption	2 Watts at 50 Hz
Weight	60 grams
Mounting	Flush Panel Mounting
Panel Cutout	46 mm x46 mm sq.
Standard Voltages	230 VAC ,50 Hz/110 VAC ,50 Hz
Square Front	52 mm x 52 mm

TECHNICAL SPECIFICATIONS

Rated Voltage	230 V, 50 Hz Standard
Consumption	2 Watts at 50 Hz.
H.V. Test	2KV, 50 Hz for 1 min.
Temperature Range	-20°C to +65°C.
Figures	White on black for full hour; yellow on black on fractional hours.
Accuracy of display	1/100th.
Weight	60 grams.
Mounting	Flush Panel type body suitable for insertion in the switch panel board recess of 46 mm x 46 mm square

**Connection Diagram & Dimensions****DIMENSIONS**

*Technical Specifications & Appearance are subject to change without prior notice