

INTRODUCTION

The Metravi WS-1051 is a professional, multifunction, intelligent Weather Station engineered and designed to meet the highest quality standards, to provide you with accurate and stable weather data.

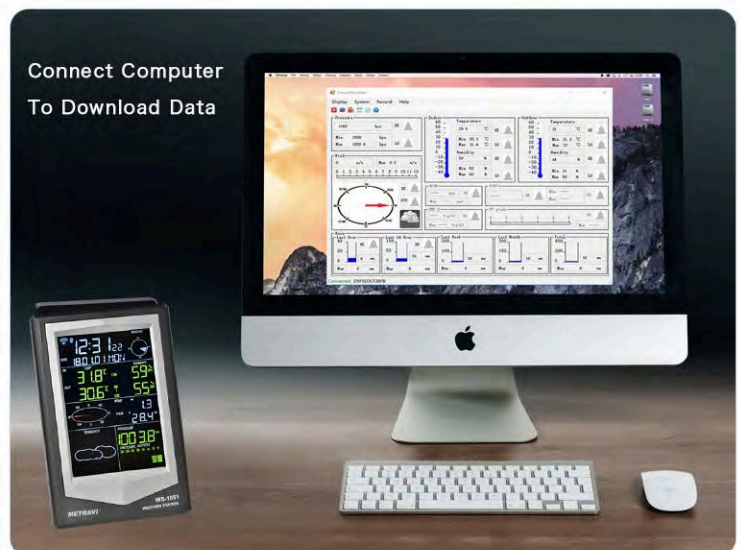
This device provides measurements of Wind Speed & Direction, Rainfall, Temperature & Humidity, Air Pressure. It features WiFi interface.

The device features one year data storage function. The data can be read through the PC software.



FEATURES

- **Calendar:** In-built calendar and display format is user-settable.
- **Clock:** user-settable
- **Alarm** functions
- **Wireless 433MHz transmission:** between indoor tablet and outdoor device/transmitter. Effective for up to 100 meters, with data transmission frequency of 40 seconds/time.
- **Temperature** measurements: Indoor & Outdoor
- **Humidity** measurements: Indoor & Outdoor
- **Wind Speed** measurements: selectable units in m/s, km/hh, mph, knots or bft
- **Wind Direction** display: shown as E, S, W, N, SE, NE, SW and NW
- **Rainfall** measurement
- Absolute value of **Atmospheric Pressure**
- **Pressure Trend Chart**
- **Weather Forecast** Cloud Map
- **Data Storage:** for upto 1 year of data
- **WiFi Interface:** for connecting to PC



*Technical Specifications & Appearance are subject to change without prior notice

TECHNICAL SPECIFICATIONS

RECEIVER

- Temperature Range : 0°C to 60°C (32°F to 140°F)
- Resolution : 1°C
- Accuracy : ±1°C

- Humidity Range : 20% to 99%
- Resolution : 1%
- Accuracy : ±5%

- Pressure Range : 300 to 1100hpa
- Resolution : 0.1 hpa
- Accuracy : 3 hpa

- Power : Alkaline Battery 3xAA 1.5V
or External DC power supply
or MINI USB power supply

- Battery Life : About 12 months (battery quality
and capacity determine the service time)



TRANSMITTER

- Temperature Range : -40°C to 60°C (-40°F to 140°F)
- Resolution : 1°C
- Accuracy : ±1°C

- Humidity Range : 20% to 99%
- Resolution : 1%
- Accuracy : ±5%

- Wind Speed Range : 0-50 m/s
- Resolution : 0.1 m/s
- Accuracy : 1 m/s (at wind speed <10m/s)

- Rainfall Range : 0-9999mm
- Resolution : 0.4mm (for rainfall <1000mm)
1mm (for rainfall >1000mm)

- Data Update : 40 seconds/time

- Power : Alkaline Batteries 2x AA 1.5V

- Battery Life : About 12 months (battery quality and
capacity determine the service time)

- Waterproofing : IPX3



*Technical Specifications & Appearance are subject to change without prior notice