

*For complete and accurate testing
of Residual Current Differentials*

A new generation of testers!

RCD tester

- ✓ *Cat. III 600 V*
- ✓ *Large backlit LCD screen
with 2 x 4000 counts and
a wide range of indicator icons*
- ✓ *Immediate error free connections
thanks to mains connection lead*
- ✓ *Alarm and date-time memory functions
(100 measurements)*
- ✓ *Optical fibre communication:*
 - *direct printing
on serial printer*
 - *data transfer of memory
to PC (transfer application
software supplied as standard)*
- ✓ *Supplied with "hands free" carrying strap*



- Automatic voltage and frequency testing of installation
- Tests on standard, selective, A and AC type differentials:
 - 5 predefined calibres (10 / 30 / 100 / 300 / 500 mA) — and one calibre ajustable from 6 mA to 650 mA
 - non-tripping test
 - tripping time measurement (pulse or ramp mode) and exact tripping current (ramp mode)
- Power-on earth measurements: earth loop and power-on loop with 1 auxiliary rod
- Current and leakage current measurement using clamp
- Phase rotation order test (2 or 3-wire)

RCD testing / earth loop / live earth (1 rod) / phase rotation / current clamp

Innovative and particularly convivial, the **C.A 6030 RCD** tester combines optimum ease of use with enhanced metrological performances for the testing of protection systems and compliancy of installations with european and international standards (NF C 15-100, IEEE, VDE 0100, NIN / NIV, VE EN-1).

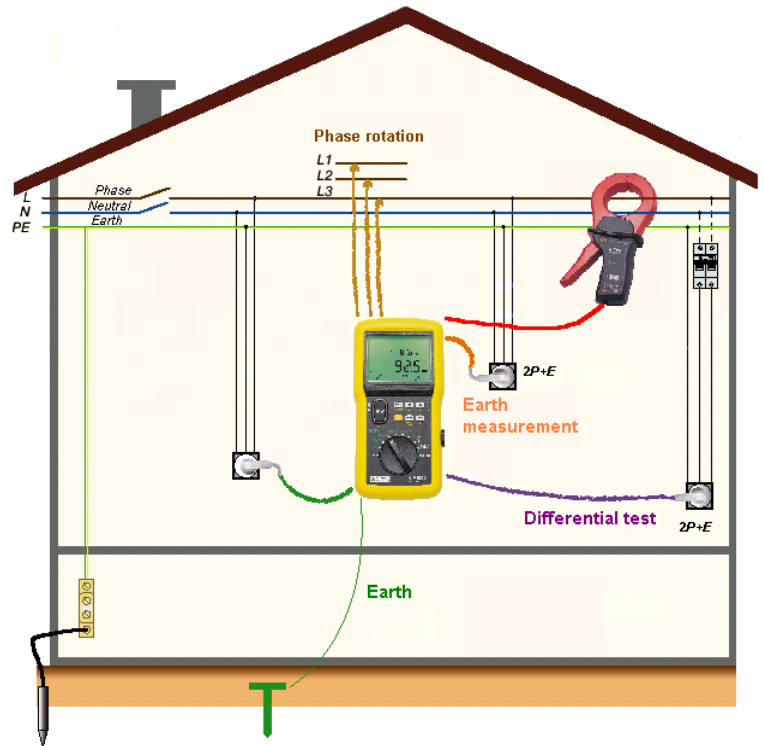
The C.A 6030 is quick and easy to set-up: it connects directly and safely to installation mains, with automatic permutation of L and N inputs if conductors are reversed at socket connection.

The measurement is selected by simple use of the rotary switch and launched by pressing on TEST. The result is then displayed on a large backlit screen.

A wide range of functionalities are accessible by direct fingertip control: activation of alarms, date / time recording of results and/or direct printing of measurement readings using serial printer, back-lit display screen...

These combined advantages place the C.A 6030 among the forerunners of a new generation of testers!

Another advantage: the data transfer application software is supplied as standard.



<ul style="list-style-type: none"> ▪ Voltage / frequency measurement 	automatic upon connection to installation: from 2 to 550 V (DC or RMS) / from 15.3 to 450 Hz	<ul style="list-style-type: none"> battery level/ autonomy stand-by deactivated lead compensation programmable alarms memory communication on memory used level
<ul style="list-style-type: none"> ▪ Differential test 	<ul style="list-style-type: none"> - $\Delta n = 10 - 30 - 100 - 300 - 500$ mA - Adjustable : 6 mA to 650 mA - non-tripping test: at $\frac{1}{2} \Delta n$ - tripping time measurement: at Δn, 2 Δn, 5 Δn, 150 mA, 250 mA - tripping current / time measurements: ramp from 0.5...1.06 Δn, in 3% increments - fault voltage: 5.0 to 50.0 V by calculation $\Delta n \times RE$ - short-circuit current: displayed up to 40 kA by calculation $IK = UREF / ZL-PE$ 	
<ul style="list-style-type: none"> ▪ Earth loop / live earth 	<ul style="list-style-type: none"> - by RCD test without tripping and without tripping using 1 auxiliary rod: from 0.1 to 4000 Ω - calculation of fault voltage and short-circuit current 	
<ul style="list-style-type: none"> ▪ Current measurement 	using clamp connections 20 A (MN20 & C172) or 200 A (C174)	
<ul style="list-style-type: none"> ▪ Phase rotation order 	on installation frequencies from 15.3 to 64 Hz and voltage 90 to 550 V using conventional method (3 wires) or sequential method (2 wires)	

Accessories :

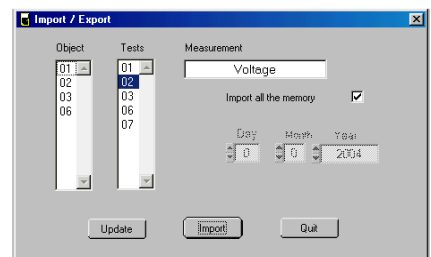
Earth kit P01.1019.99
carrying bag containing
+ 1 earth rod
+ 30 m green cable

Serial printer P01.1029.03

Clamp MN20 P01.1204.40
Clamp C172 P01.1203.10
Clamp C176 P01.1203.30

To order

- **C.A 6030 RCD Tester (Euro) P01.1915.11**
 Supplied with "hands free" carrying strap and accessories bag:
 1 mains lead
 1 3-wire lead
 3 test probes / 3 crocodile clips
 1 user's manual in 5 languages
 1 data transfer application software
 1 communication lead



General specifications

- Power supply: 6 x 1.5 V batteries or rechargeable batteries
- Complies with standards EN 61010-1 and EN 61557
- Electromagnetic compatibility (EMC) rating EN 61326
- IP 54 Dimensions: 211 x 108 x 60 mm ; Weight: 900 g

FRANCE
 Chauvin Arnoux
 190, rue Championnet
 75876 PARIS Cedex 18
 Tel: +33 1 44 85 44 86
 Fax: +33 1 46 27 95 59
 export@chauvin-arnoux.fr
 www.chauvin-arnoux.fr

UNITED KINGDOM
 Chauvin Arnoux Ltd
 Waldeck House - Waldeck Road
 MAIDENHEAD SL6 8BR
 Tel: +44 1628 788 888
 Fax: +44 1628 628 099
 info@chauvin-arnoux.co.uk
 www.chauvin-arnoux.co.uk

MIDDLE EAST
 Chauvin Arnoux Middle East
 P.O. BOX 60-154
 1241 2020 JAL EL DIB (LEBANON)
 Tel: +961 1 890 425
 Fax: +961 1 890 424
 camie@chauvin-arnoux.com
 www.chauvin-arnoux.com

